

# Type **TW723**

**WEH<sup>®</sup> Connector for pressure and function testing**

of fuel lines with bead, collar or external thread



## General

### DESCRIPTION



#### Features

- Central test port
- Connection in seconds
- No hand tightening required
- Integrated shut-off valve
- Robust construction
- High-grade materials

The WEH® Connector type TW723 has been specifically developed to connect fuel lines for engine hot testing. The design of the connector is best suited for narrow spaces and meets the demand of such applications. Type TW723 has a central test port (optional 90° possible) for ease of use. No need for time-consuming and tedious hand threading, thus saving costs and repetitive strain injury.

An integrated shut-off valve prevents leakage of fuel and enables a clean and safe operation.

#### Application

Quick connector for pressure and function testing of fuel lines with bead, collar or external thread. Special version for connection to rubber fuel hoses is also available.

### TECHNICAL DATA

Characteristic	Basic version
Nominal bore DN	3.5 mm
Operating pressure PS	Max. 10 bar
Temperature range	+5 °C up to +100 °C
Medium	Petrol, Diesel, compressed air
Actuation	Manual actuation via grip sleeve
Material	Corrosion resistant
Sealing material	FKM
Design	With integrated shut-off valve

Other designs on request

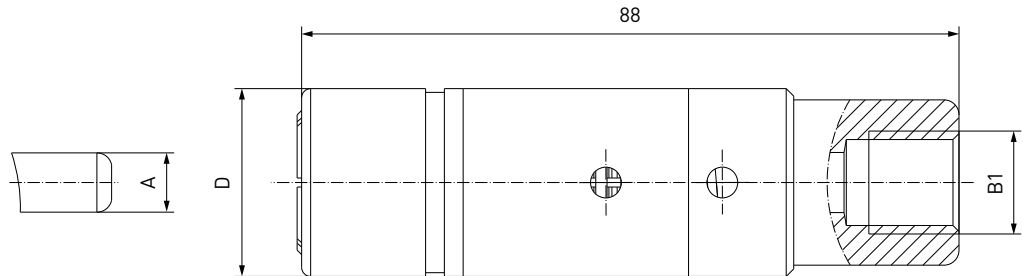
#### Example of use:



**Ordering**

**ORDERING | Quick connector TW723 for beads and collars**

approx. dimensions (mm)



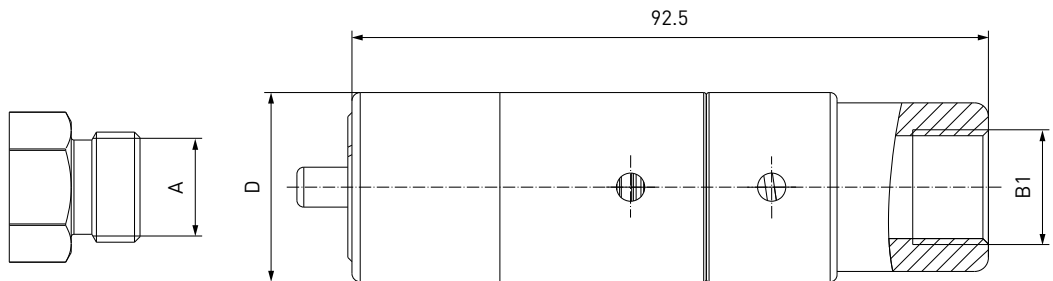
Part No.	Description	Clamping diameter A	Inlet B1	D
<b>On request</b>	TW723	Depending on customer's application	G1/4" internal thread	25.0
<b>On request</b>	TW723	Depending on customer's application	G1/4" / G3/8" internal thread	27.5
<b>On request</b>	TW723	Depending on customer's application	G3/8" internal thread	33.0

Other connector sizes and versions on request. Please note, that the external diameters of the connector might differ from the ones of other versions.

On request type TW723 is also available without integrated shut-off valve, with test port 90° (inlet B1 = G1/8" internal thread) or for connection to rubber fuel hoses.

**ORDERING | Quick connector TW723 for external threads**

approx. dimensions (mm)



Part No.	Description	Clamping diameter A	Inlet B1	D
<b>On request</b>	TW723	M14x1.5	G1/4" internal thread	25.0
<b>On request</b>	TW723	M16x1.5	G1/4" / G3/8" internal thread	27.5
<b>On request</b>	TW723	M16x1.5	G3/8" internal thread	33.0

Other connector sizes and versions on request. Please note, that the external diameters of the connector might differ from the ones of other versions.

On request type TW723 is also available without integrated shut-off valve or with test port 90° (inlet B1 = G1/8" internal thread).

## Accessories

### ACCESSORIES

The following accessories are available for type TW723:

#### Screw plug

If the connector is to be used as a plug, inlet 'B1' will be sealed with a screw plug of brass. It is recommended that the media compatibility of the seal be tested by the customer!



Part No.	Description	Thread	Pressure range
<b>E69-9200</b>	Screw plug	G1/8" external thread	0 - 50 bar
<b>E69-9210</b>	Screw plug	G1/4" external thread	0 - 50 bar
<b>E69-9220</b>	Screw plug	G3/8" external thread	0 - 50 bar

Other threads on request

## Other products

### OTHER PRODUCTS

You will find more products in our current catalogue no. 35



Further information on our homepage  
[www.weh.com](http://www.weh.com)

#### Abbreviations/Definition

Explanation of abbreviations see technical appendix in the catalogue or [www.weh.com](http://www.weh.com)

#### Safe product selection

Our WEH® Products are designed to be operated by qualified professional users (insofar as WEH® Products are also designed to be operated by other users in individual cases, this is explicitly stated in the corresponding operating instructions). You alone are responsible for the selection of WEH® Products and their configuration according to the requirements of your system. In doing so, please particularly consider your intended use, your performance data, your material compatibility, your system concept and your system limits as well as your technical and legal requirements for operation, handling and maintenance. The quality and safety of WEH® Products is our highest priority. For this reason, WEH® Products may not be used outside the specifications in the relevant Product data sheets and product descriptions. We also strongly recommend that you refrain from using third-party spare parts or a combination of WEH® Products with unsuitable third-party products. You alone are responsible for reviewing the suitability of third-party products. WEH® Products and WEH® Spare parts comply with our quality and safety standards.

#### Explanation on the Pressure Equipment Directive

These WEH® Products are generally and exclusively classified as pressure accessories for piping in accordance with Article 2 (5) of the Pressure Equipment Directive 2014/68/EU. These WEH® Products may not be used (i) as safety accessories or (ii) for vessels as defined by the Pressure Equipment Directive 2014/68/EU. Therefore, the application of these WEH® Products must comply with their classification as pressure accessories for piping. The assessment with regard to a different classification can, however, be made on request.

#### External change management

WEH reserves the right to update, optimise and adjust its products continuously. This may result in corresponding changes of the product. Customers will be informed proactively or unsolicited by WEH only in individual cases about product updates, product optimisations and/or product adaptations that have been carried out. You are free to contact WEH at any time to request information about any product updates, product optimisations and/or product adjustments.

© All rights reserved, WEH GmbH. Any unauthorized use is strictly forbidden. Subject to alteration.  
No liability will be assumed for any content. Herewith previous versions are no longer valid.

### » Contacting

For queries and further information, please do not hesitate to contact us.

Manufacturer:

**WEH GmbH Precision Connectors**

Josef-Henle-Str. 1  
89257 Illertissen / Germany

Phone: +49 7303 9609-0  
Fax: +49 7303 9609-9999

Email: [sales@weh.com](mailto:sales@weh.com)  
[www.weh.com](http://www.weh.com)